

FROST RAIL FEATURES & REQUIREMENTS

PROJECT _____

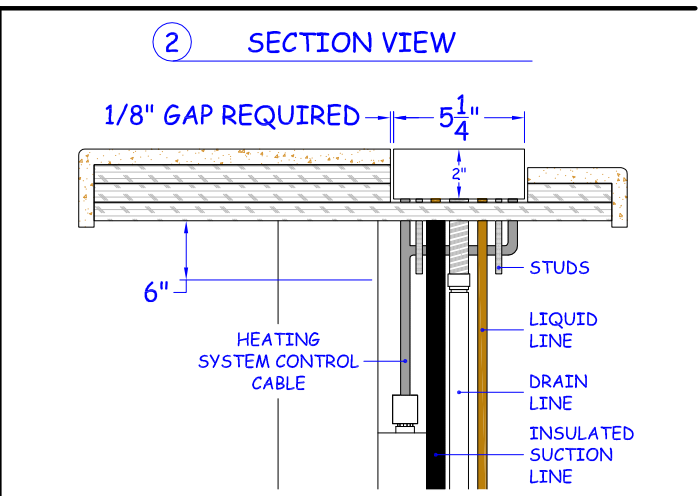
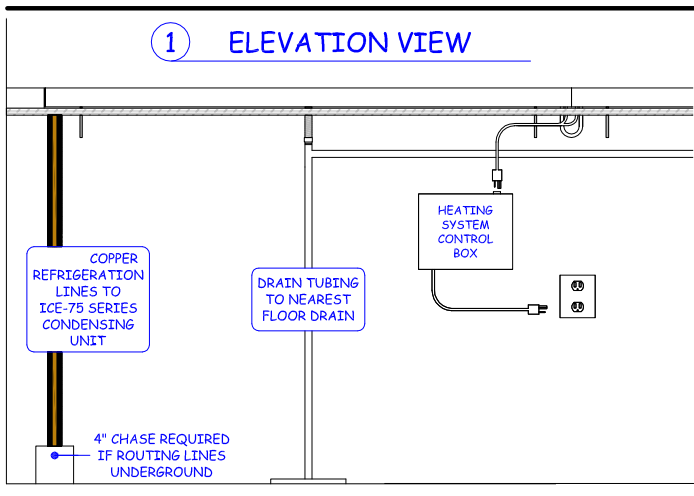
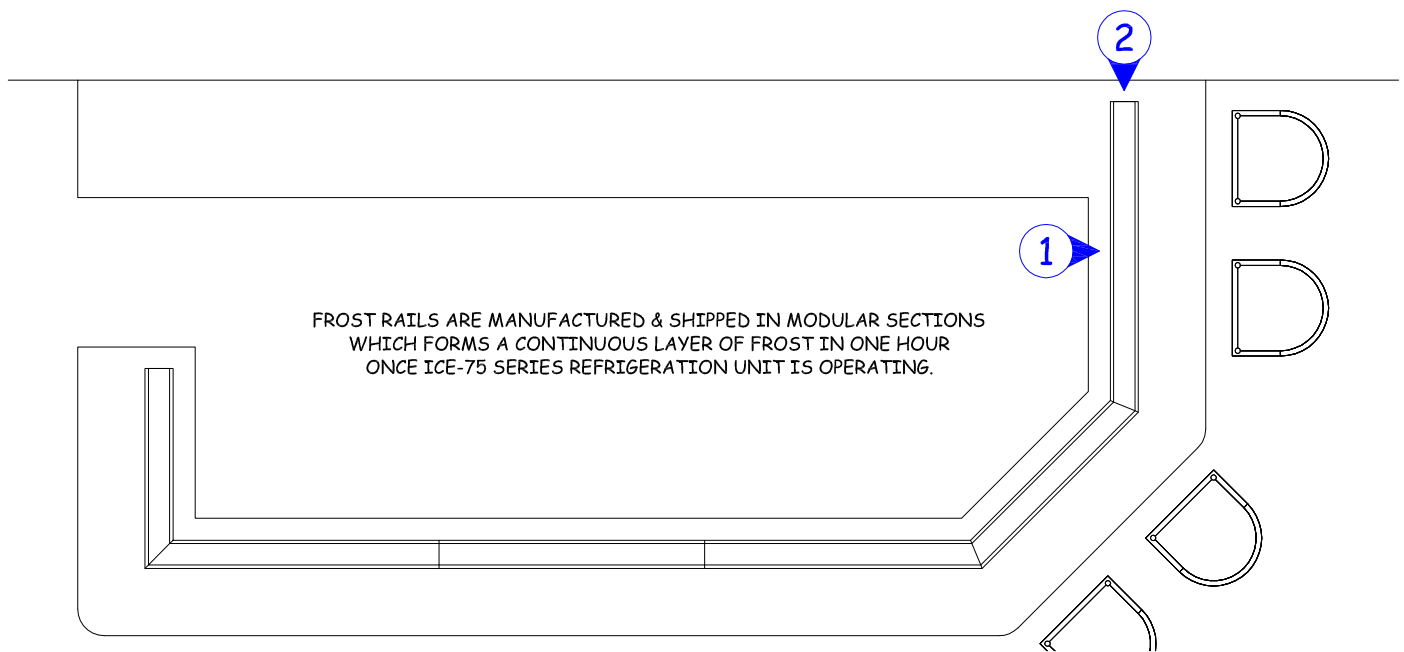
ITEM # _____

FEATURES:

- CREATES AN AESTHETICALLY PLEASING & UNIQUE CRISP, DRY LAYER OF FROST ON BARTOP
- IDEAL FOR PATRONS TO REST BEER MUGS & COCKTAILS UPON
- BUILT IN DEFROST SYSTEM KEEPS FROST PRISTINE - TIME CLOCK ON ICE-75 UNIT CONTROLS HOURS OF OPERATION
- BUILT HEATING SYSTEM ELIMINATES ANY UNWANTED CONDENSATION
- FROST RAIL CAN BE INTEGRATED WITH ANY YETI DISPENSING TOWER OR SAV LIQUOR SYSTEM
- CUSTOMIZED TO FIT YOUR BAR NEEDS - CONTACT FACTORY FOR SPECIAL APPLICATIONS

REQUIREMENTS:

- SIGNED APPROVAL DRAWINGS ARE REQUIRED BEFORE MANUFACTURING CAN BEGIN
- FROST RAIL MUST BE PLACED ON THE BARTENDER SIDE OF THE BAR DIE WALL
- MINIMUM CLEARANCE UNDER BOTTOM OF BAR TOP OF 6" REQUIRED FOR ALL SECTION SEEMS
- UNDER BAR AREA MUST BE ACCESSIBLE FOR INSTALLATION OF FROST RAIL COMPONENTS
- (1) 115V RECEPTACLE UNDER BAR FOR HEATING SYSTEM CONTROL BOX - 10" L x 8" H x 3" D - 10 AMPS TOTAL
- COPPER REFRIGERATION LINES FROM FROST RAIL TO ICE SERIES CONDENSING UNIT - INSULATE SUCTION LINE
- ICE-75 SERIES CONDENSING UNIT IS USED FOR ALL FROST RAIL APPLICATIONS



2371 GAUSE BLVD. WEST
SLIDELL, LA 70460
P.O. BOX 5566 - ZIP 70469



www.CHILLRITE32.com
800.256.2190 - TOLL FREE
985.641.0183 - FAX